

Owenmore Cottage



Owenmore Cottage is a spacious, one-level, six-bedroom home (3,000 sq ft) within the Ballynahinch Estate. It features private gardens and views of the Owenmore River, just a three-minute walk from the hotel. Ideal for families or groups, it offers modern design, cosy furnishings, and picture windows with views of the lawns and woodlands. Each pair of king and twin bedrooms shares a bathroom; two bathrooms have baths with overhead showers, and one has a walk-in shower. Extra beds are not available.



Securing your reservation

For both 3 day and 7 day exclusive lets, a 50% non-refundable deposit is required to secure your reservation, with the remaining 50% due 30 days prior to arrival.

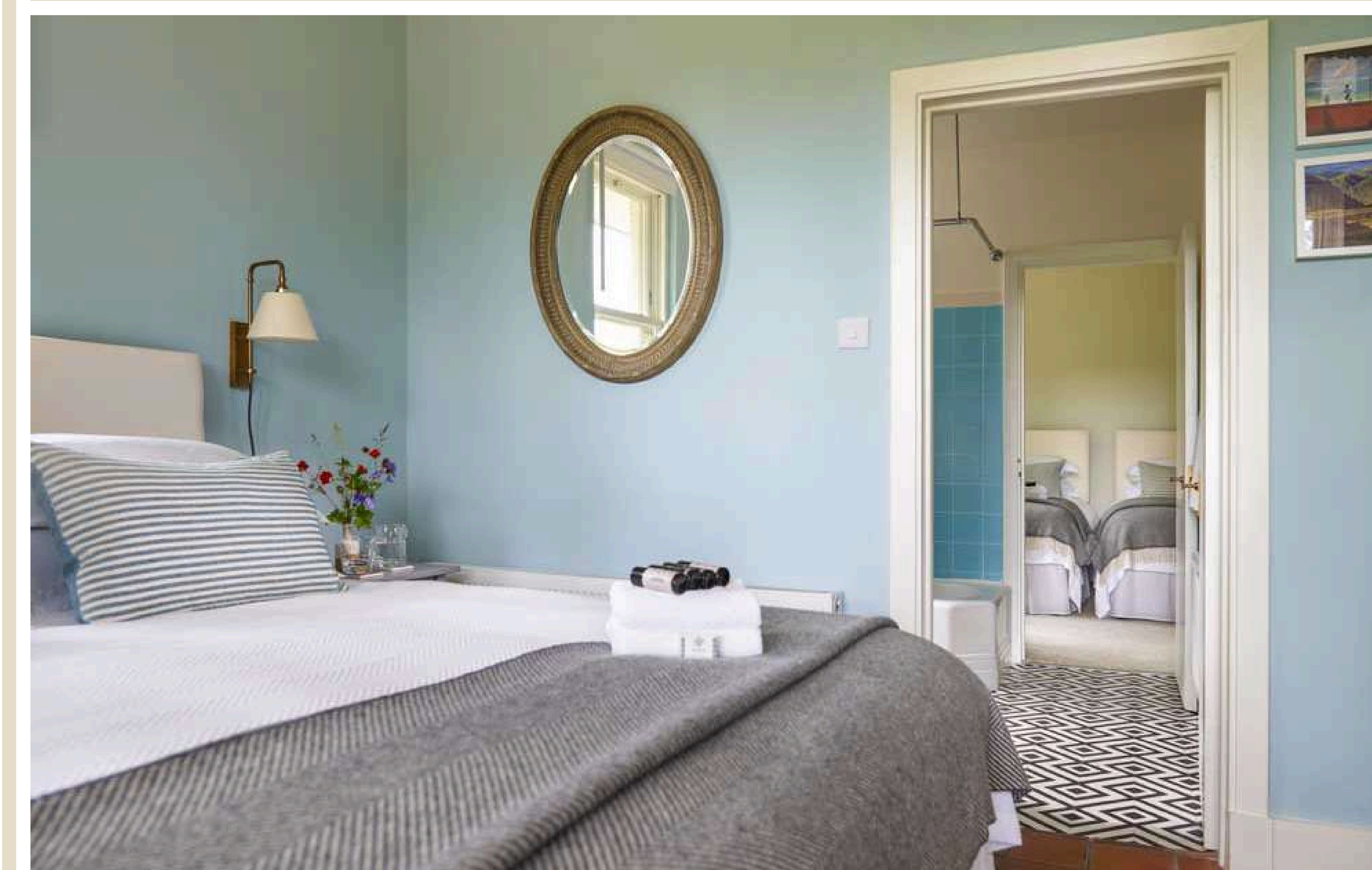
For Rates

For enquires on our best available rates, please contact reservations on

info@ballynahinch-castle.com

or

phone us on +353 95 31006





17 56
BALLYNAHINCH
CASTLE
HOTEL & ESTATE

Check in & Check out Times

Check in: 5pm, Check out: 10am

Included in an Exclusive Let

Housekeeping services once during a 7 day stay

Towels on request

Complimentary Bicycles (subject to availability)

Free WiFi

Bathrobe & Slippers

Parking

The Cottage is located 3 minutes walk from the hotel, with it's own
private vehicle & pedestrian entrances.



Dining

Lunch & dinner are available by reservation in the hotel. Subject to availability.

Optional Extras

Family style roast dinner delivered to the lodge:

Grocery shopping can also be organised in advance (service fee of 15%).

We do not offer room service to our self-catering lodges.

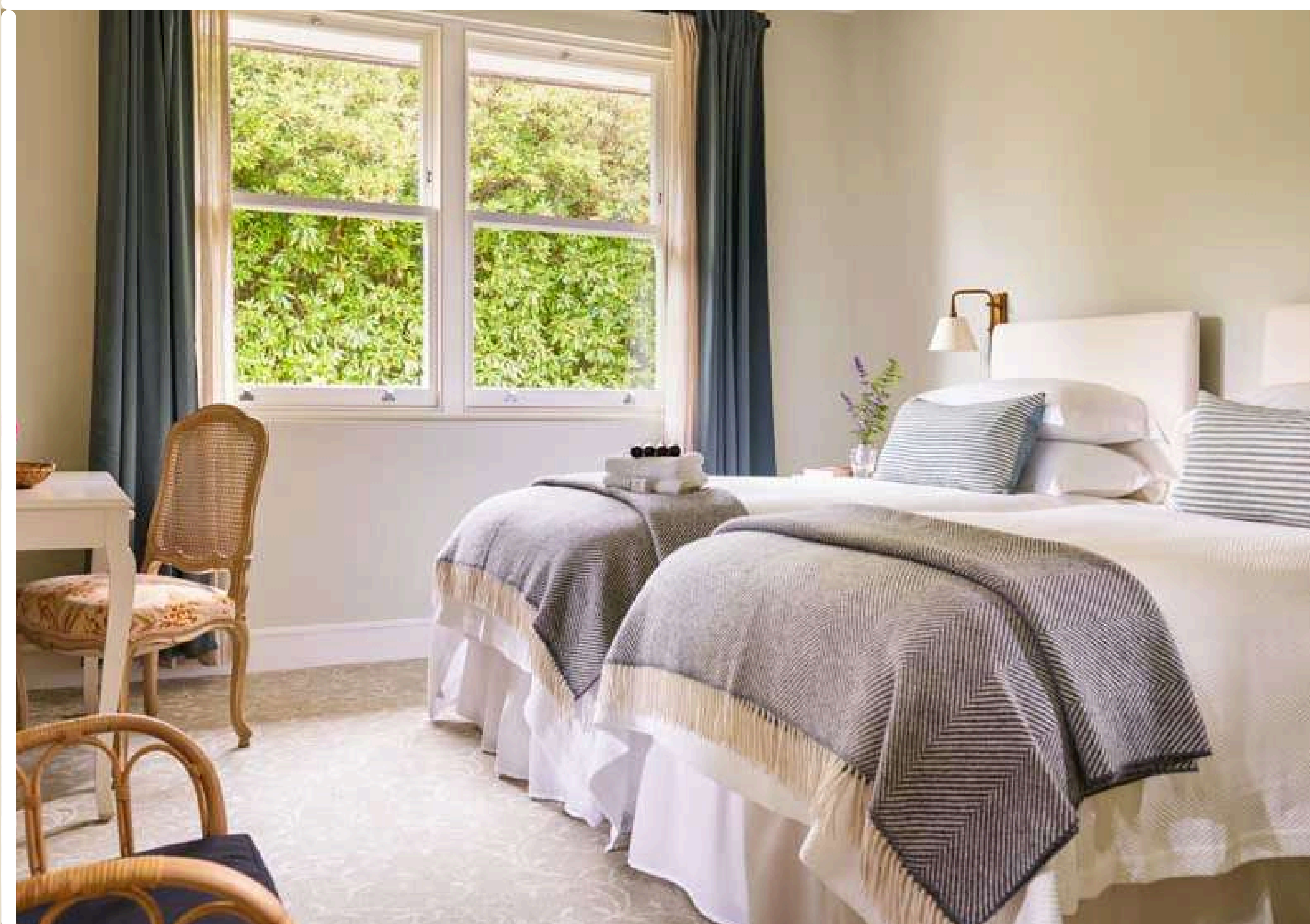


For your safety & comfort

To ensure your safety & comfort whilst staying with us
we offer the following.

On arrival to the hotel you will be given directions to
the lodge where we will provide the check in process and
run through security.

Strict **no pets** policy. Fee will be applied to final bill.





Activities

There are so many things to do and ways to engage with Connemara from the Ballynahinch Estate; hike our trails, try a fly-fishing tutorial, a boat adventure at sea, explore by bicycle, relax in our woodland saunas or simply sit in the tranquillity of the grounds while listening to the the river.

Please contact our reservations team,
info@ballynahinch-castle.com
should you wish to organise activites & dining.

Roundstone Bay Boat Tour

Trips from €85 per person
or €500 for a party of 7 people (private tour)



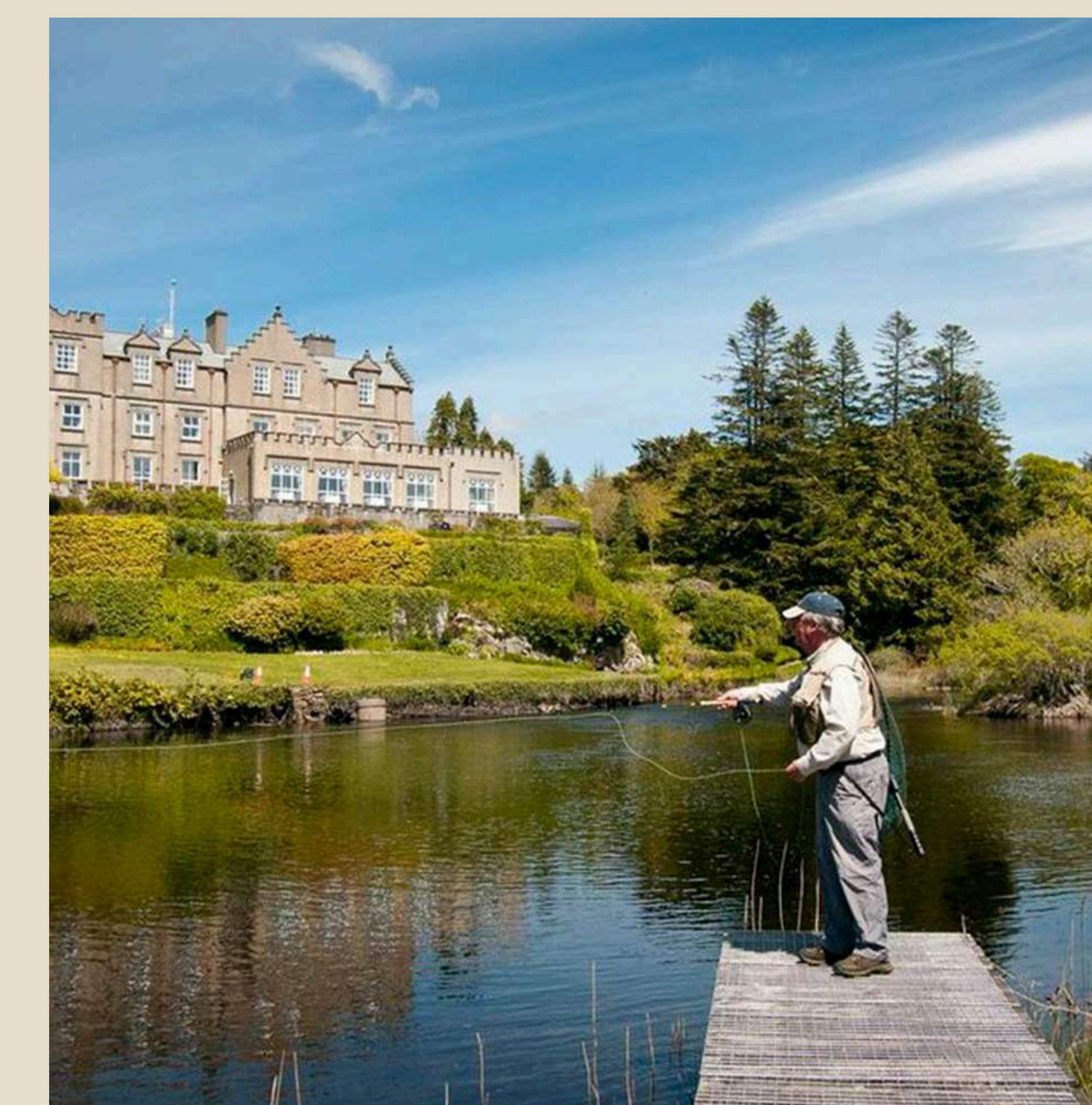
Cycling Connemara

Complimentary bike hire available



Fly-Fishing

Half Day Tutorials from €230 per person
Full Day Tutorials from €290
Full price list available on request



Guided Estate Walk

Guided walks start from €30 per person



Picnic Selection

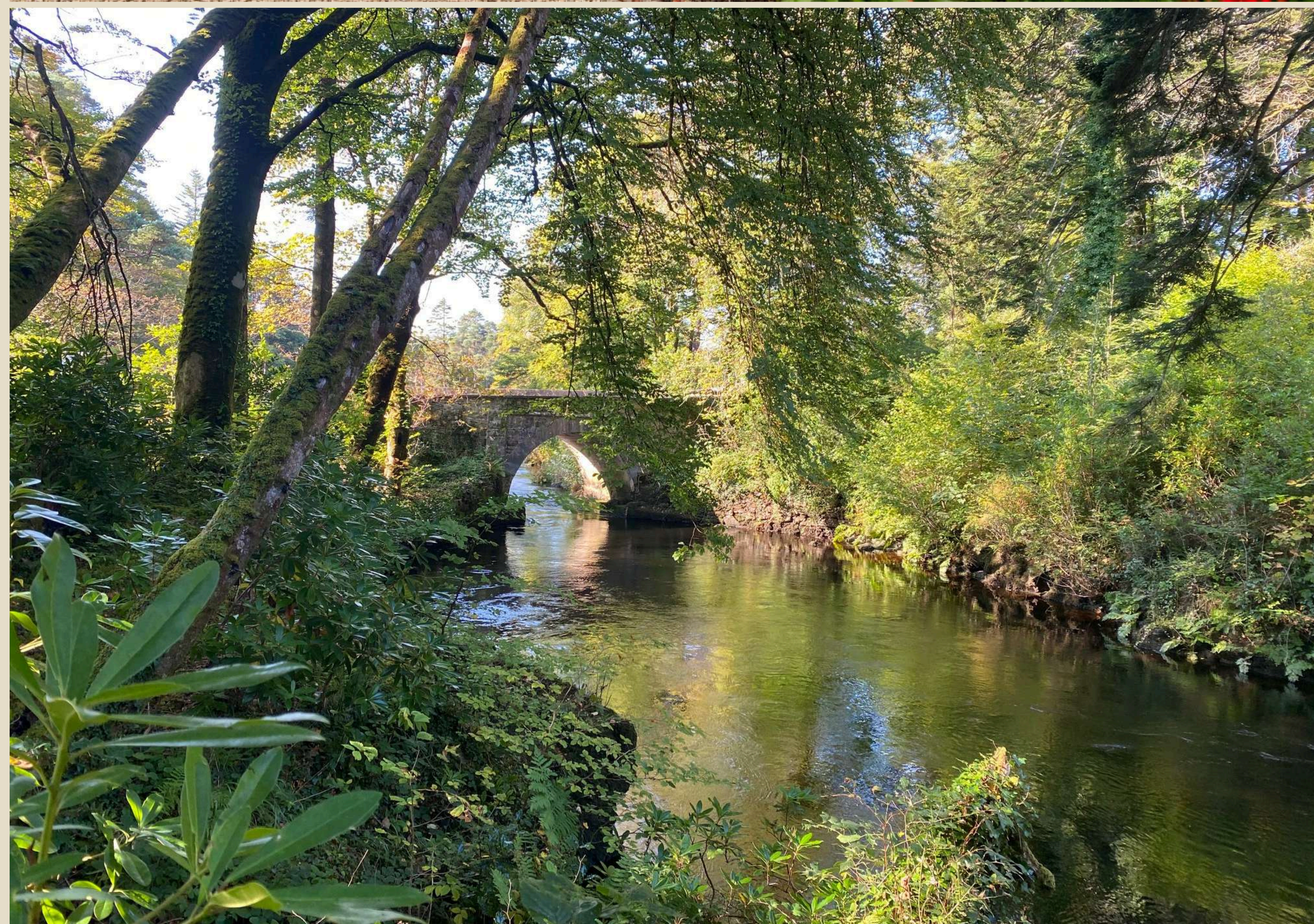
For our full picnic menu, please contact us directly



Woodland Saunas

€60 for 2 and €10 per person after up to 4 guests





For further information

Please contact our reservations team,

By calling:

00353 95 31006

info@ballynahinch-castle.com

should you wish to organise activities & dining.